



DEPARTMENT OF
INDUSTRIAL DESIGN

EUT350E CONTEMPORARY FURNITURE DESIGN
2020 SPRING SEMESTER

Dr. L. N. Ece Arıburun Kırca

Group 1 - Deniz Yılmaz , Hazal Burç , Buse Selvi , Ayşe Nilay Anıl

Group 2 - İpek Karasu , Deniz Sağlamol

Group 3 - Meryem Çiftçi , Aynur Uçar , Ümmühan Dut , Ece Ünlü

Group 4 - Osman Mert Genç , Sena Öztürk , Ceren Mutluay

Group 5 - Gonca Mutaş , Burak Çelikkanat , Pelin Nur Karabay , Gözde Aça

Group 6 - Eda Kılıç , Ayşe Derelioğlu , Elif Öykü Karataş , Kerim Turan

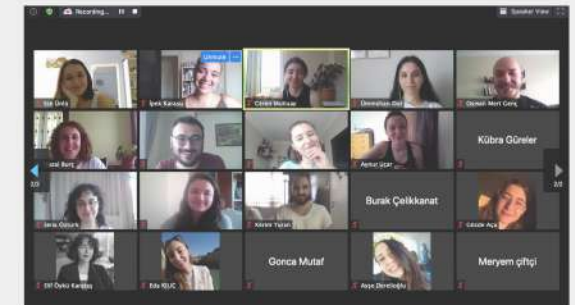
Group 7 - Asya Öklü , Kübra Güreler

Group 8 - Selen Elif Argadal

A Furniture Design System for Household People During Lockdown

This catalogue consists 8 group projects developed in EUT 350E Contemporary Furniture Design undergraduate elective course, in 2020 Spring Semester under Online Education effective 21.05.2020-08.07.2020.

Our course started in studio environment with face to face interaction and shifted to online education regarding the lockdown regulations. 24 undergraduate students from Department of Industrial Design and Department of Interior Architecture were enrolled in the course. For the final submissions, students were asked to develop a detailed furniture design system for household people during lockdown. Each week a milestone has had to be achieved such as; scenario building and brainstorming ideas for the first week, developing themes and evaluation of initial ideas through sketches, collages, concept/mood boards for the second week, reviews and further development of detailing, ergonomics, material and manufacturing processes for the third and fourth week and so on. Being in a lockdown was an unpredictable and therefore an unprepared experience for all of us. But we wish that furniture design outcomes of this project might ease the lockdown process within our households.





Ayşe Nilay Anıl
anil17@itu.edu.tr



Buse Selvi
selvib16@itu.edu.tr



Deniz Yılmaz
dyilmaz@itu.edu.tr



Hazal Burç
burc15@itu.edu.tr

Group 1

HYGGE

Multifunctional furniture
system for people working
from home during
lock-down

The design of the furniture is aimed to meet needs of the many, which increased with the individual time that is spent at home during the pandemic period. In this period, with the result of not being able to go out, the decrease in benefiting from sunlight is core value of the design.

Usage of sunlight is emphasized with a seating element that can be easily moved to the balcony. With the seating element used in different environments, the mobility in the house is adapted regarding to this system. The seating element is stored in the edge of the table. One foot of the table is designed to be thick for the cat to scratch. A luminous lighting element is placed on the work table, and the cables are hidden in thick standing.

Pandemi döneminde bireylerin evde geçirdikleri sürenin artması üzerine tasarlanan mobilyanın herkesin bazı ihtiyaçlarına cevap vermesi amaçlanılmıştır. Bu dönemde dışarı çıkamama sonucu güneş ışığından yararlanmanın azalmasına dikkat çekilmiştir.

Balkona kolayca çıkarılabilen oturma elemanı ile güneş ışığından yararlanma teşvik edilmiştir. Farklı ortamlarda kullanılan oturma elemanı sayesinde evdeki hareketliliğe ayak uydurulmuştur. Oturma elemanı masanın kenarında depolanmıştır. Masanın bir ayağı kedinin tırmalaması için kalın olarak tasarlanmıştır. Çalışma masasına gözü yormayacak bir aydınlatma elemanı yerleştirilmiş ve kablolar kalın ayakta gizlenmiştir.



working



resting



cat straching



storage



MERT KORKMAZ

Mert who just married is a person who lives in an average size apartment with his wife and his cat in Sarıyer. He has been working from home as a freelancer in the position of an UI/UX Designer for 5 years. He works from 10 a.m. to 5 p.m. every weekday. His wife is a yoga instructor and they love spending their free time at their balcony.

PERSONA IN LOCKDOWN

Mert and his wife work from home since Covid-19 virus has spread around the globe and they are spending much more time than usual at their balcony for sunlight.

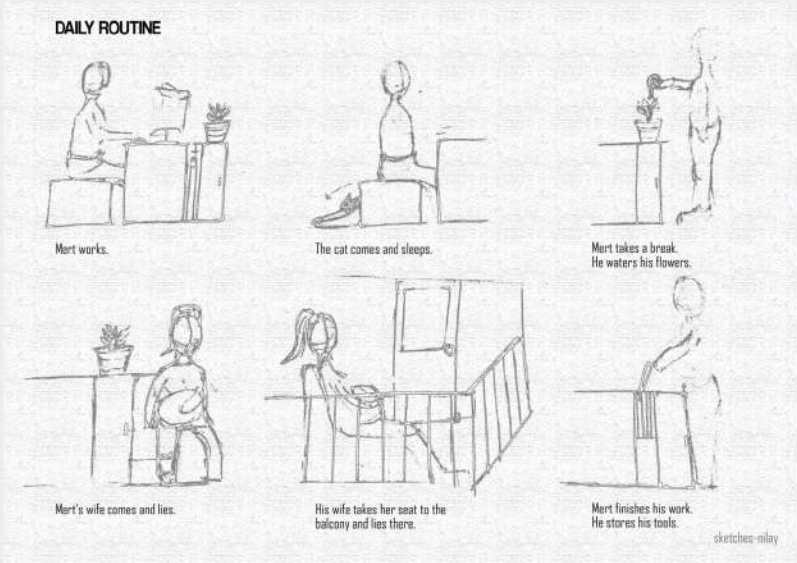


natural

togetherness

multifunctional

simple



DAILY ROUTINE

Mert works.

The cat comes and sleeps.

Mert takes a break.
He waters his flowers.

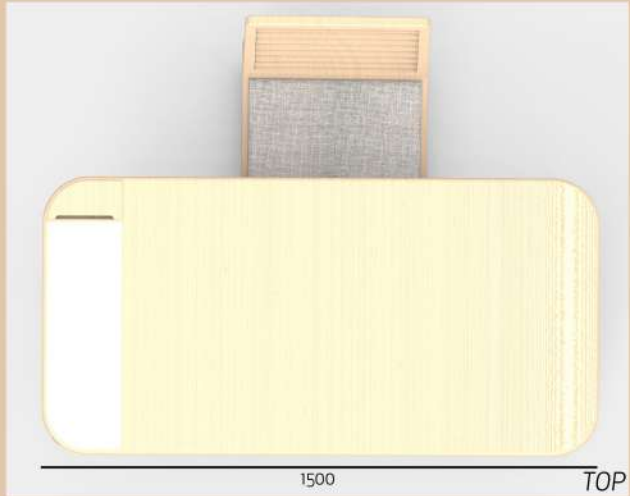
Mert's wife comes and lies.

His wife takes her seat to the
balcony and lies there.

Mert finishes his work.
He stores his tools.

sketches-nlay





Raw linen



Oak wood



White painted
aluminium



Hemp rope



İpek Karasu
karasu15@itu.edu.tr



Deniz Sağlamol
saglamol16@itu.edu.tr

Group 2

KITCHEN HD

Social area and kitchen interface furniture used for shooting during lockdown.

During lockdown, trying new recipes in the kitchen is the common way for spending time. And we designed a social area-kitchen interface furniture targeted the people who want to share this adventure. In case of a need, this furniture transforms into a stage.

This furniture has the basic kitchen equipment and is a compact area yet denies of being the main kitchen of the house. One of concerns of this furniture is to give an aesthetic picture on screen. So it is aimed to be perceived all points of the furniture on screen and on the minds of the people with their unique look. When it's not used for shooting, the furniture transform into a social area.

Karantina sürecinde mutfakta yeni tarifler denemek zaman geçirmek için yaygın bir yol. Biz ise bu serüvenini insanlarla paylaşmak isteyenleri hedef alarak sosyal alan-mutfak arayüzünde bir mobilya tasarladık. Bu mobilya gerektiğinde ise bir video set-up'ına dönüşüyor.

Bu mobilya bir mutfağın temel donanımına sahip fakat evin ana mutfağı olma iddiasında olmayan kompakt bir alandır. Bu mobilyada güdülen kaygılardan biri de ekranda estetik durmasıdır, bu nedenle tek bir video karesinde her noktanın algılanması ve özgünlüğü ile insan zihninde yer etmesi amaçlanmıştır. Çekim alanı olmadığı süre içinde ise mobilya bir sosyal alana dönüşür.



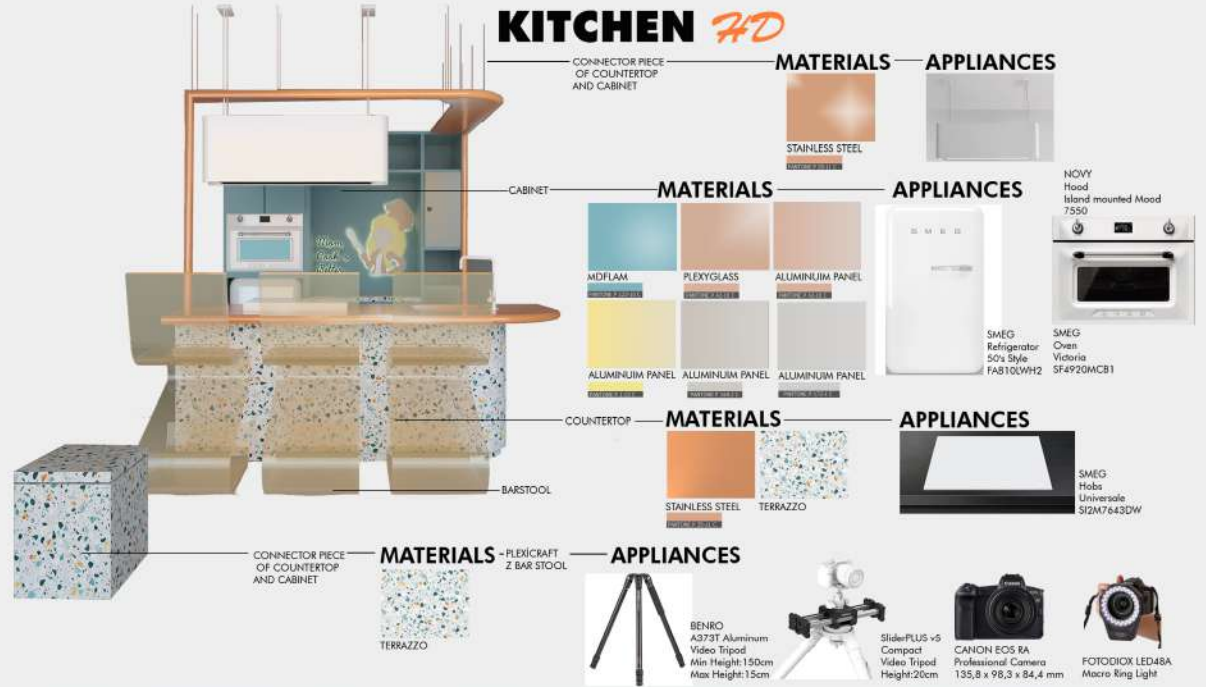
cooking

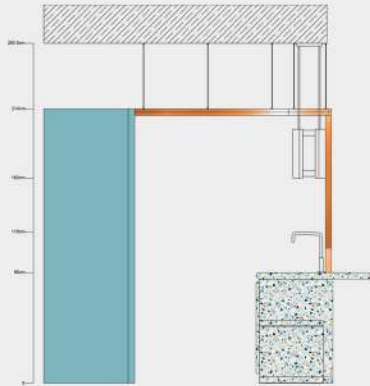


shooting

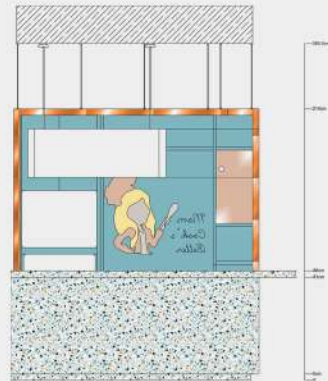


socialise

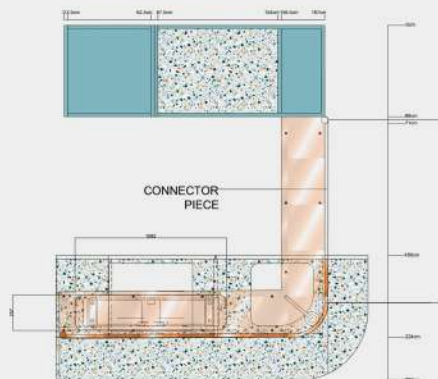




SIDE

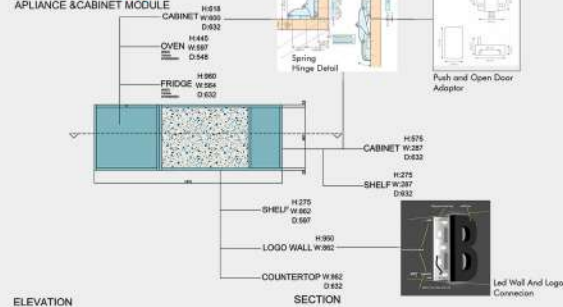


FRONT



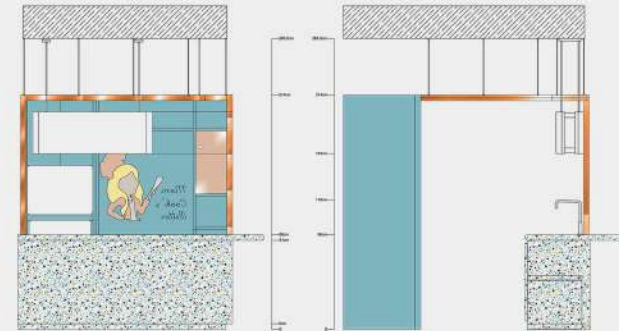
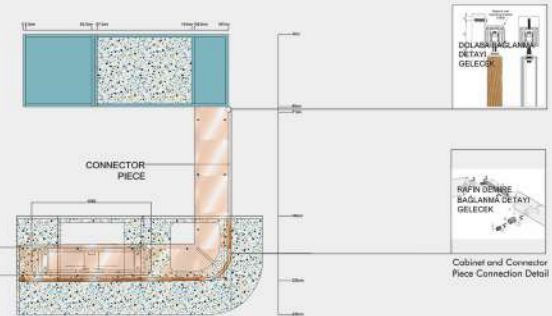
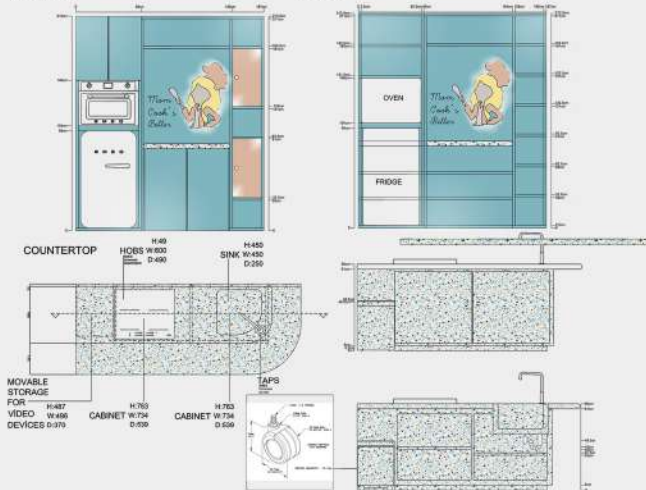
TOP

KITCHEN 3D APPLIANCE & CABINET MODULE



ELEVATION

SECTION



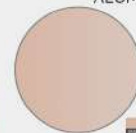
ALUMINIUM PANEL



STAINLESS STEEL
PANTONE P 35-11 C



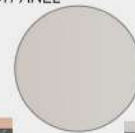
MDFLAM
PANTONE P 123-10 C



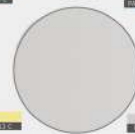
PANTONE P 40-55 C



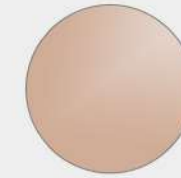
PANTONE P 133 C



PANTONE P 40-55 C



PANTONE P 123-10 C



PLEXYGLASS
PANTONE P 42-10 C



TERRAZZO



Ece Ünlü
ece-unlu@hotmail.com



Meryem Çiftçi
meryemciftci97@gmail.com



Aynur Uçar
aynurucar@hotmail.com



Ümmühan Dut
ummuhandut@outlook.com

Group 3

MIRUM

*the burrow that meets
all the needs of pre-teen
and surprises them*

Mirum is designed for pre-teens (9-14 age group) individuals who spend all their time at home during the quarantine period and are bored with their own fields. Thanks to this fun and mysterious furniture system, the time they spent in their rooms was made more efficient and quality.

Due to the areas created for different actions in a single shell, both their individuality is at the forefront and their responsibility and duty order awareness is supported. They are not distracted because of the resting area created on the hidden panel coming out of the work area. With the new normal, technology started to enter life more. With the help of touch panels in Mirum, the relationship between technology and pre-adolescent individuals has been established in a healthy way.

Mirum, karantina döneminde tüm zamanını evde geçiren ve kendi alanlarından sıkılmış olan ön ergen (9-14 yaş grubu) bireyler için tasarlandı. Bu eğlenceli ve gizemli mobilya sistemi sayesinde onların odalarında geçirdikleri zamanın daha verimli ve kaliteli olması sağlandı.

Tek bir kabuk içerisinde farklı eylemler için oluşturulmuş alanlar sayesinde, hem kendi bireysellikleri ön planda oluyor hem de sorumluluk ve görev sırası bilinci desteklenmiş oluyor. Çalışma alanından çıkan gizli panel üzerinde oluşturulan dinlenme alanı sayesinde dikkatleri dağılmıyor. Yeni normal ile birlikte teknoloji hayatın içine daha çok girmeye başladı. Mirum'da bulunan dokunmatik paneller sayesinde teknoloji ve ön ergen bireylerin ilişkisi sağlıklı bir şekilde kurulmuş oldu.



sleeping



working



storage



resting

İTÜ



DEPARTMENT OF
INDUSTRIAL DESIGN



PRE-TEENS

We decided to focus on a persona that is preteen. Preteen means a person between the ages of 9 and 12. They go to school, start to build their character and learn about themselves, their personalities, socialize with other kids and pick up hobbies. Our persona is a 11 years old male in 5th grade. His has a middle class family. He is a very intelligent and hyperactive person. He wants to attend to poetry readings. He likes to collect action figures and read kids' magazine. He wants his own privacy but he is in the same room with his sister.

PRE-TEENS IN LOCKDOWN

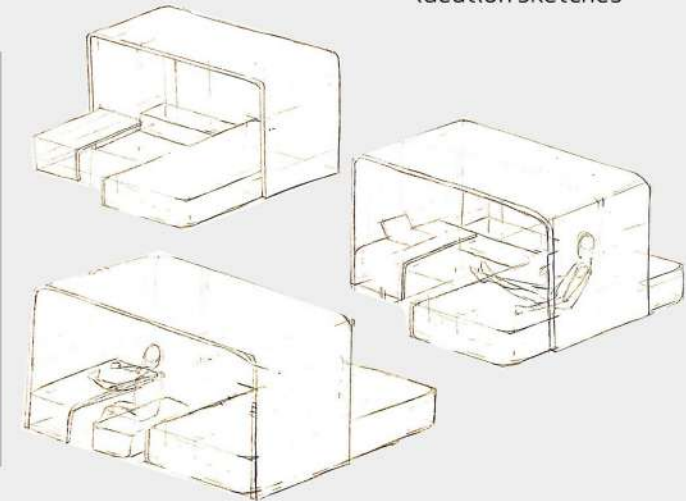
Preteens are feeling overwhelmingly bored of studying because they aren't doing any other activities in the house. They require guidance about how they can spend their time. They mostly don't have their personal space so they don't get to express themselves enough.



survey outcomes



ideation sketches



product moodboard





formation of resting area



rail system of panel



assembly detail of panels



012 C



4181 C



2179 C



417 C



Ceren Mutluay
cerenmmutluay@gmail.com



Osman Mert Genç
osmertgenc@gmail.com



Sena Öztürk
sozturk17@itu.edu.tr

Group 4

TIGRIS

*Dining, working and
storage area for two
people in lockdown*

Tigris defines an area of 8 square meters, consisting of 3 main units: kitchen, panels and table, which provides eating, working and storage.

While the panels act as a separator that separates the space from other parts of the house, it also contains elements where books or trinket-like items can be stored. While carrying the main lighting element of Tigris, the panels provide a background for individuals who make video conferences. The table offers a sufficient and comfortable space to eat and work. The kitchen, which can easily store many kitchen items and packaged products, is designed in a form that can meet the needs of two people.

Tigris mutfak, paneller ve masa olmak üzere 3 ana birimden oluşan, yemek yeme, çalışma ve depolamayı sağlayan 8 metrekairelik bir alanı tanımlıyor.

Paneller, alanı evin diğer bölümlerinden ayıran bir seperatör görevi görürken, aynı zamanda kitap veya biblo benzeri eşyaların depolanabileceği elemanlar içeriyor. Tigris'in ana aydınlatma elemanının taşıyıcılığını üstlenen paneller; video konferans yapan bireyler için bir arka plan oluşturuyor. Masa, yemek yemek ve çalışmak için yeterli ve rahat bir alan sunuyor. Birçok mutfak eşyasını ve paketli ürünü rahatlıkla depolayabilen mutfak, iki kişinin ihtiyaçlarını karşılayabileceği formda tasarlandı.



working



eating



storage



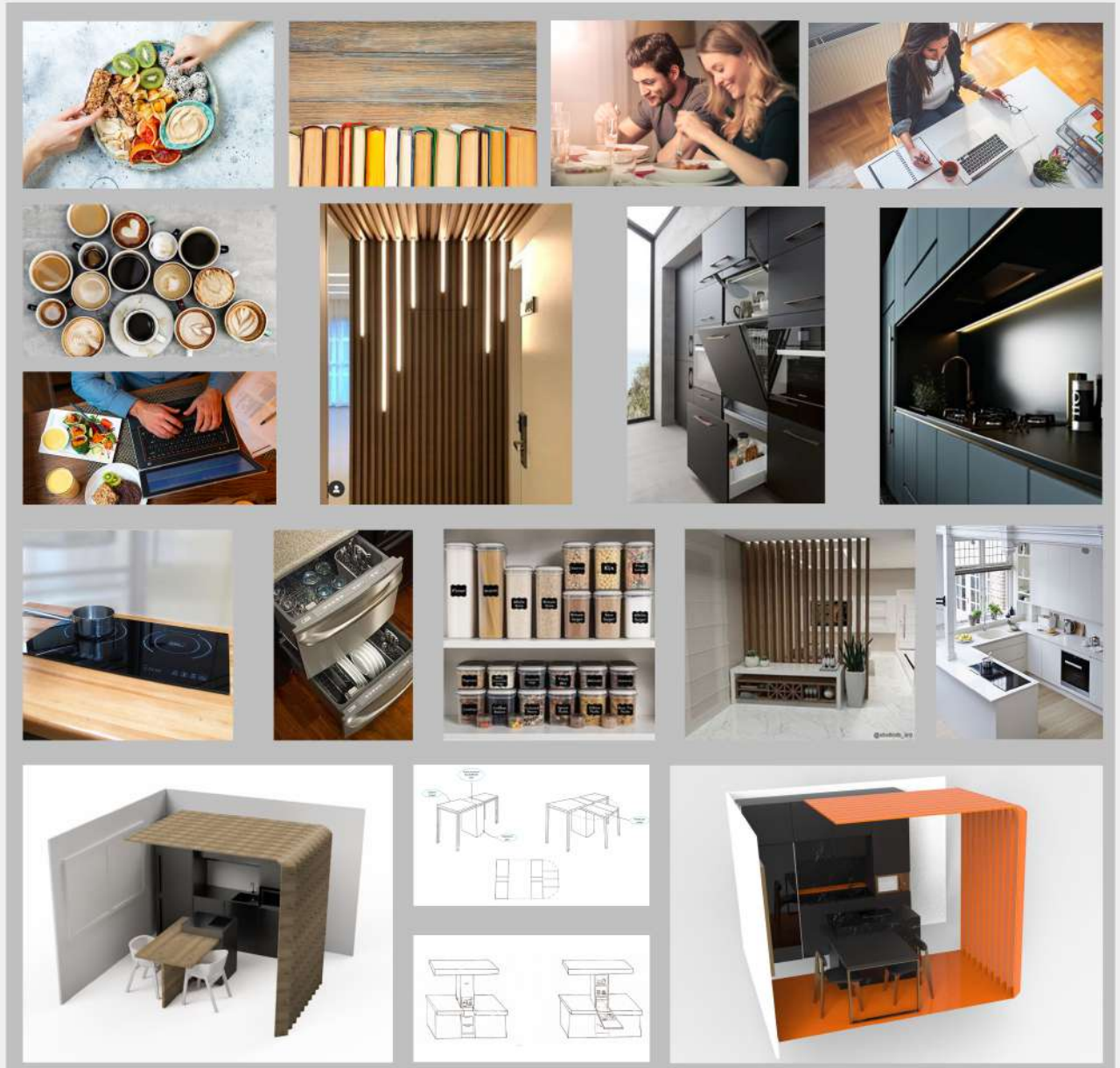
WORKING COUPLES

Selin is 31 years old. She is a management engineer and works in the marketing department of a company. She's graduated from ITU. She is responsible and organized. In her free time, she likes to lie on her bed and read books. Sometimes she watches her favorite series on her laptop.

Edge is 32 years old. He is a mechanical engineer and works in an electronics company. He's graduated from ITU as well. He currently lives in Istanbul with his fiancé. He cares a great deal of importance to his work and is hard working. He likes to play video games on his laptop in his free time. He likes to watch movies on the sofa with his fiancé.

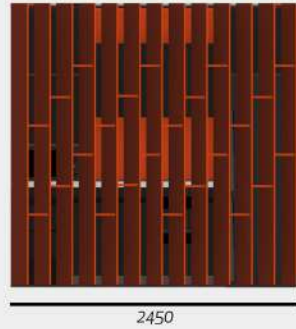
WORKING COUPLES IN LOCKDOWN

They used to work in their offices before the pandemic. However, now they run their business from home. Thus, they are spending more time in the kitchen.

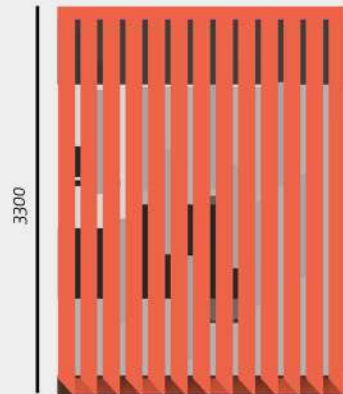




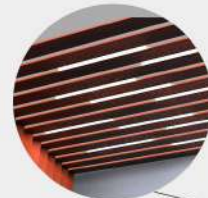
SIDE



FRONT



TOP



Lighting



Stove and range hood



Assembly Detail



Assembly Detail



Dishwasher



Black Wood
Vennered MDF



Muğla (White Ibiza)
Marble



PMS Orange 021 C
#FE5000



Burak Çelikkanat
celikkanat16@itu.edu.tr



Gonca Mutaf
mutaf15@itu.edu.tr



Gözde Aça
aca17@itu.edu.tr



Pelin Nur Karabay
karabay17@itu.edu.tr

Group 5

SWING

An experimental furniture system that lets you explore

Swing is a dynamic furniture system that turns daily experiences such as work, rest and storage into a new experience.

Swing, which solves working, resting and storage problems in narrow spaces by using a modular system, adds a new perspective to daily activities with its dynamic structure. This new experience enhances the motivation of individuals by providing a convenient environment for the user to stay in the moment during work and rest.

Swing, çalışma, dinlenme ve depolama gibi günlük deneyimlere hareket katarak yeni bir deneyime dönüştüren, dinamik bir mobilya sistemi.

Dar alanlarda çalışma, dinlenme ve depolamayı modüler bir sistem kullanarak çözen Swing, hareketli yapısı sayesinde günlük aktivitelere yeni bir bakış açısı katıyor. Bu yeni deneyim, çalışma ve dinlenme süresince kullanıcıya anda kalması için elverişli bir ortam sağlayarak bireylerin motivasyonunu yükseltiyor.



WORKING

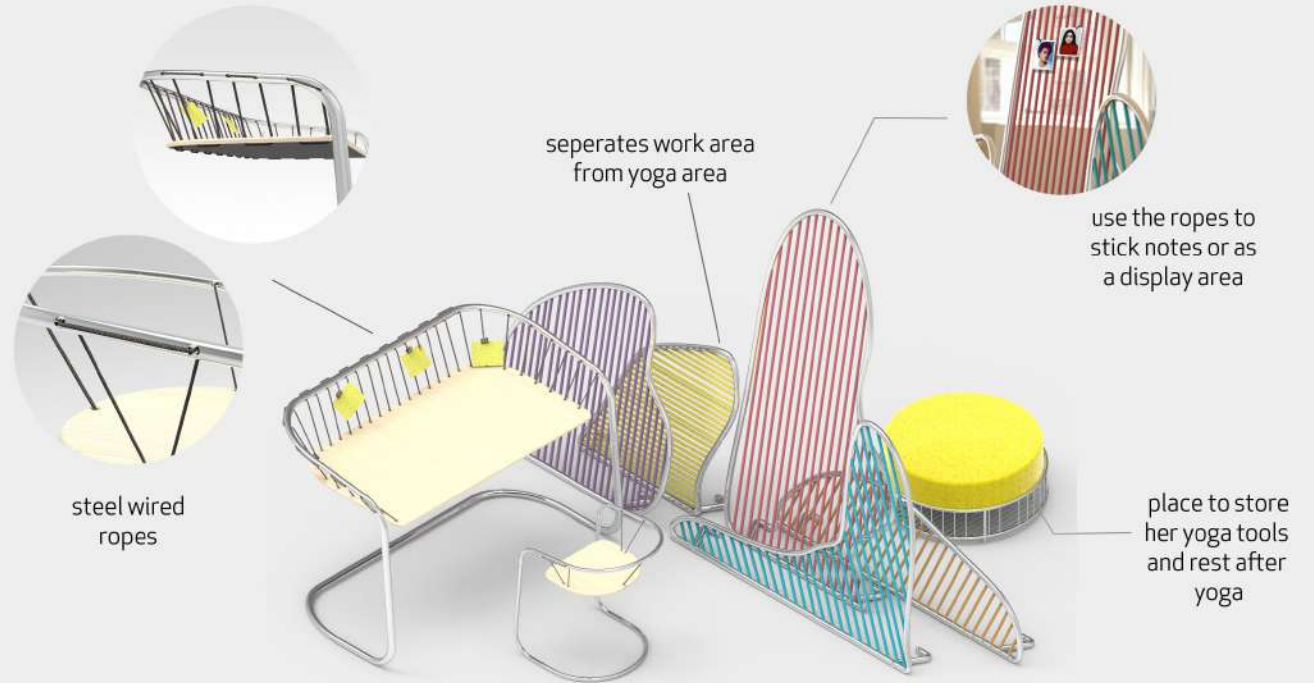
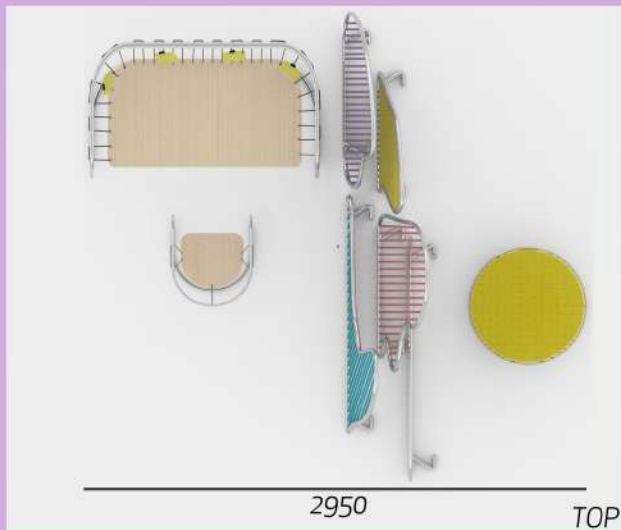
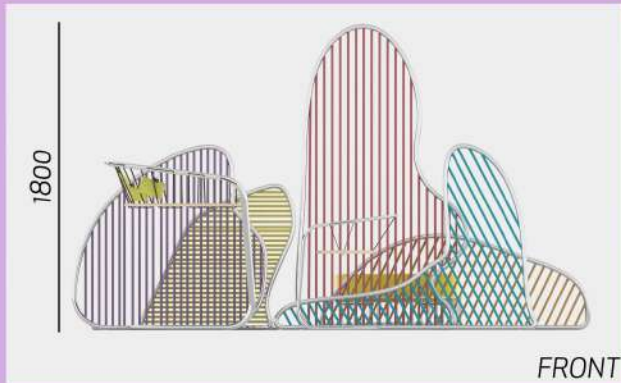
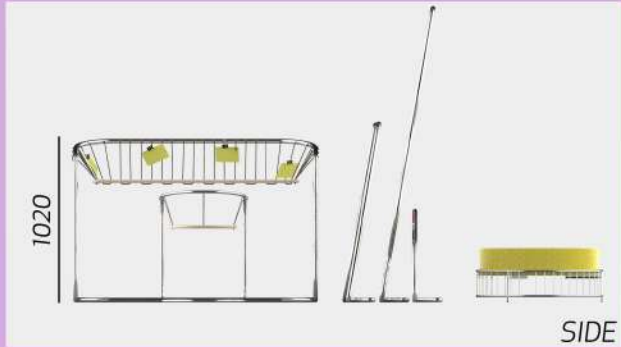


RESTING

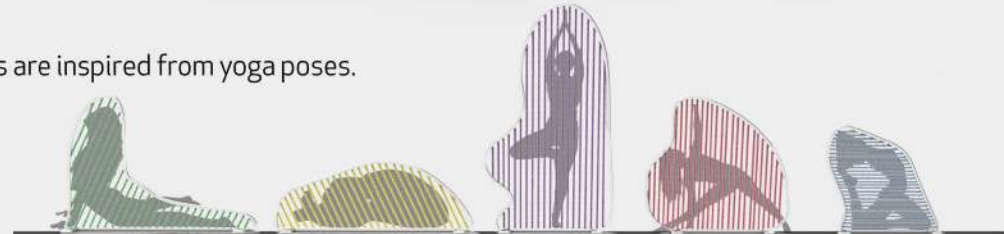


STORAGE





Separators are inspired from yoga poses.



Aluminum
Profile



Pine
Wood



Polyurethane
Foam



Steel Wired
Rope



PANTONE
2340 C



PANTONE
631 C



PANTONE
101 C



Ayşe Derelioğlu
derelioğlu16@itu.edu.tr



Eda Kılıç
kiliiced15@itu.edu.tr



Elif Öykü Karataş
karataşel17@itu.edu.tr



Kerim Turan
turank@itu.edu.tr

Group 6

ACTIVE WALL

Think about a wall which gives you what you need.

Active Wall is a design system that participates in the movement of the walls in the house, purifies the actions the user needs and provides a fun experience.

Active Wall, evdeki duvarların da harekete katılarak, ihtiyacınız olan eylemleri arındırılmış ve eğlenceli bir deneyimle size sunan bir tasarım sistemidir.

Active Wall design system, which contains various contents from resting to working with VR technology, from vertical garden to an active exhibition area is a movable modular wall that saves the walls in living spaces from being boring with technological touches and clears furniture crowd by combining separately occupied furniture in a single system.

Dinlenmeden VR teknolojisiyle çalışmaya, dikey bahçeden aktif bir sergileme alanına kadar çeşitli içerikleri barındıran ACTIVE WALL tasarım sistemi, yaşam alanlarındaki duvarları teknolojik dokunuşlarla sıkıcı olmaktan kurtarıp, ayrı ayrı yer kaplayan mobilyaları tek bir sistemde birleştirerek mobilya kalabalıklığından arınmayı sağlayan hareketli bir modüler duvardır.

WORKING



STORAGE



DISPLAY
with illumination system



RESTING



İTÜ



DEPARTMENT OF
INDUSTRIAL DESIGN

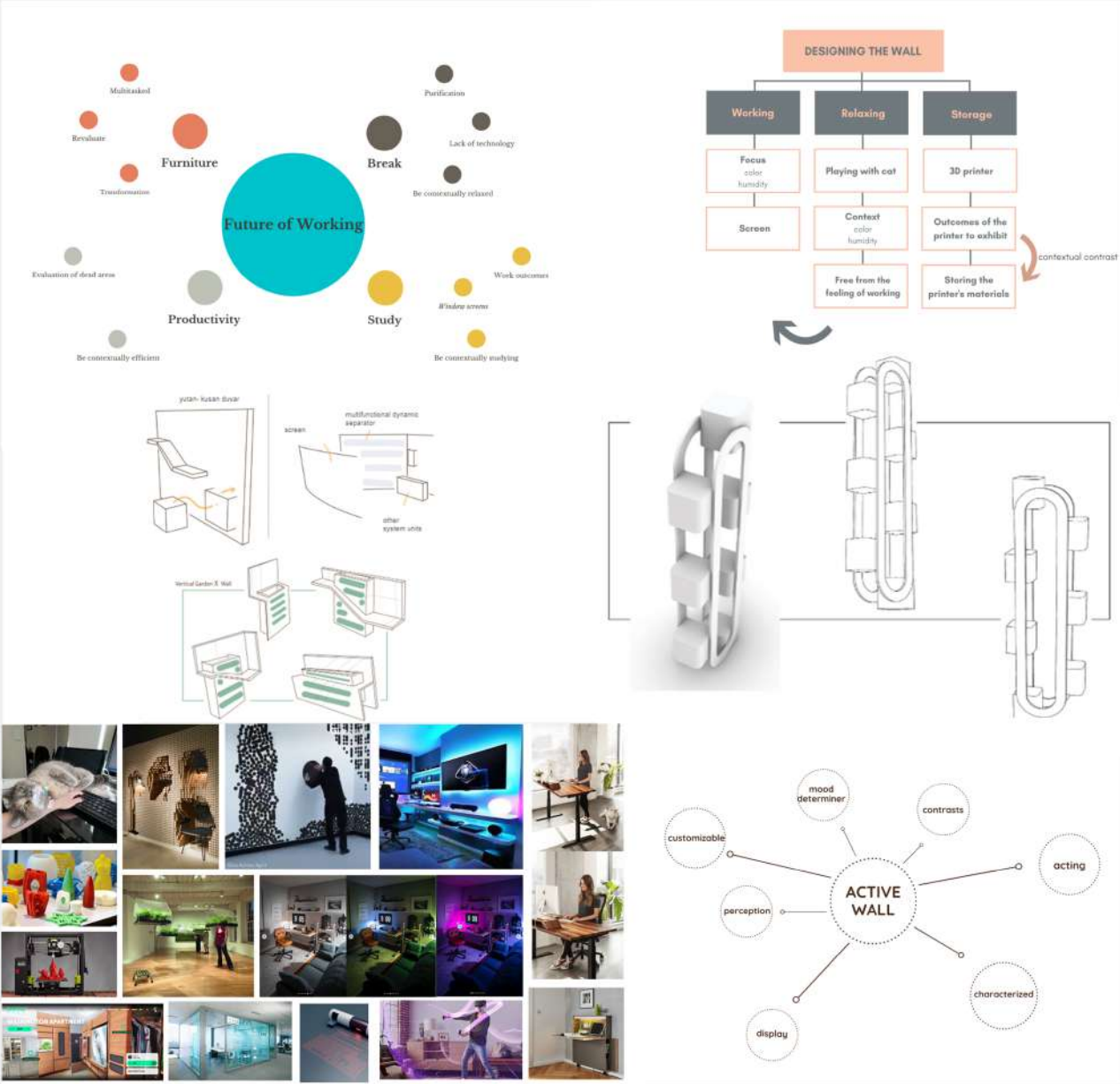


DENİZ

Deniz is an industrial design student who loves to follow new technologies and produce his own designs with his 3D printer. He likes to display the outcomes. His cat Mırmır loves to play with him when he gives a break from work. Deniz is not happy with trying to control everything in the house by himself. He feels that everything in the house is very complicated and needs to be more modular. He likes to go to the cinema but after the lockdown, he is worried about the hygiene of movie theaters. So he prefers watching movies from home.

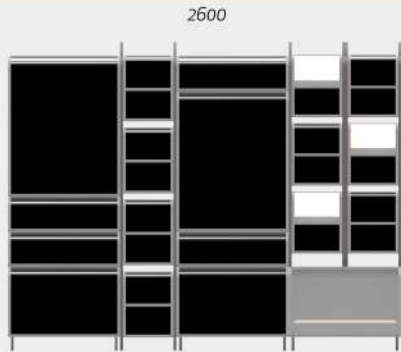
PERSONA IN LOCKDOWN

During the lockdown Deniz stays at home as much as possible and modifies his old furnitures. He thinks that every furniture makes his apartment look very crowded so he tries to find a new way to use one furniture for multiple purposes.





SIDE



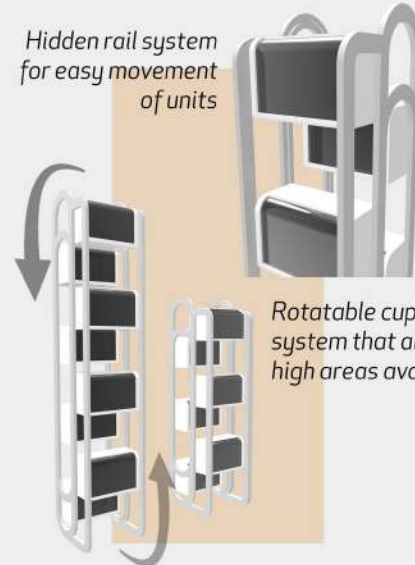
FRONT



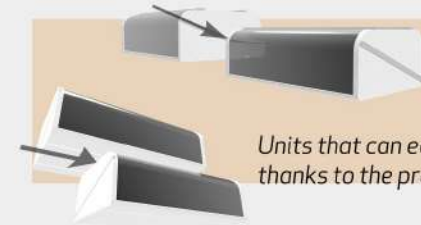
TOP



Hidden rail system
for easy movement
of units



Rotatable cupboard
system that also makes
high areas available.



Units that can easily snap together
thanks to the protrusions and recess

Illumination detail hidden in the
openable lid for display of products
and shelf contents.



Inflatable seat connected
to the ventilation system in



recycled nylon
#f0d8c6



painted wood
#c8c8c8



metal
#a5a5a5



Asya Öklü
oklu17@itu.edu.tr



Kübra Güreler
soybas15@itu.edu.tr

Group 7

COWO

A multifunctional furniture system for both small houses and work from home people

The Cowo provides a 3-step usage for the user; storage, working and reading. The Cowo is a corner-piece to increase focus while working and comfort while relaxing. The rotatable working space enables extra room when not in use.

It offers different storage areas with two shelves, two drawers and a cupboard to satisfy the user's needs. The hidden wheels of the working space offer an easy rotation. The triangular piece can be place according to the user's wants. The user can adjust the height, direction and the brightness level of the lighting-charging unit by twisting it in and out.

Cowo, kullanıcı için 3 adımlı bir kullanım sağlar; depolama, çalışma ve okuma. Cowo, çalışırken odağı ve rahatlarken rahatlığı artırmak için bir köşe parçasıdır. Dönebilen çalışma alanı, kullanılmadığında ekstra alan sağlar.

Kullanıcının ihtiyaçlarını karşılamak için iki raf, iki çekmece ve bir dolap ile farklı depolama alanları sunar. Çalışma alanının gizli tekerlekleri kolay bir dönüş sağlar. Üçgen parça kullanıcının isteğine göre yerleştirilebilir. Kullanıcı, aydınlatma şarj ünitesinin yüksekliğini, yönünü ve parlaklık seviyesini içeri ve dışarı doğru bükerek ayarlayabilir.



side table



leisure



working



storage

İTÜ



DEPARTMENT OF
INDUSTRIAL DESIGN

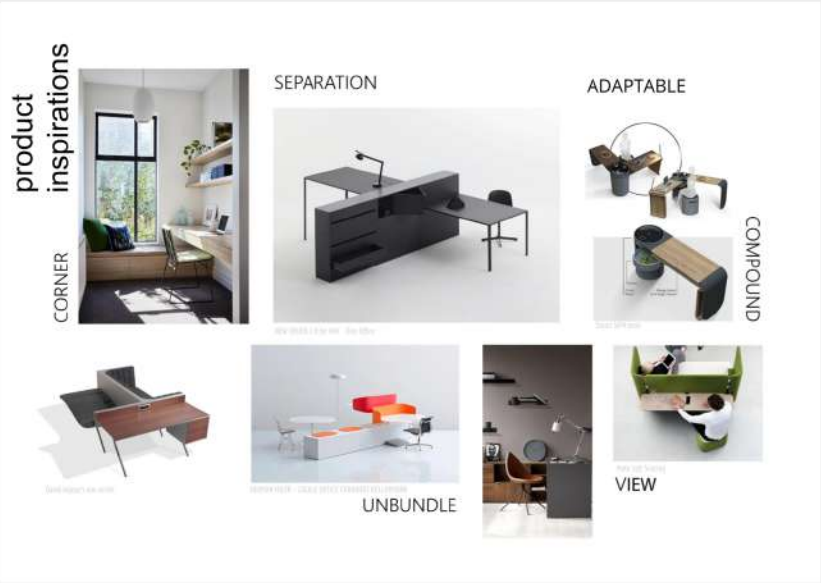


PELIN YILMAZ

Pelin Yılmaz is a 27 years old single woman living in a studio apartment in Ataşehir, Istanbul. She is a writer and currently writing her new book from home. She also works in a publisher as an editor for 4 days. Rest of the week, she prefers mostly staying at home and continuing to her new book. She is an introvert and likes being alone. She is really hard-working and ambitious. She is interested in minimalism so clutter free and multifunctional spaces are very important for her.

PERSONA IN LOCKDOWN

With the sudden lockdown because of Covid-19, many people have to work from home. Working from home requires a working area and storage space. The Cowo combines storage with working and also provides a space for relaxation in a stressful time in life. The user can use the product all day long; the user can drink and eat on the side table while The Cowo is in a closed form. When the desk is rotated outwards, The Cowo offers a wide working surface for satisfying different occupations' needs and a laying area for user to relax and read. The storage area is easily accessible in both the closed and the opened form; and the opened and closed storage areas help to keep things organized and separated.





FRONT



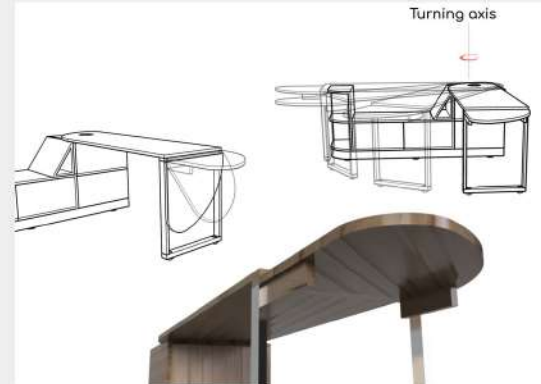
TOP



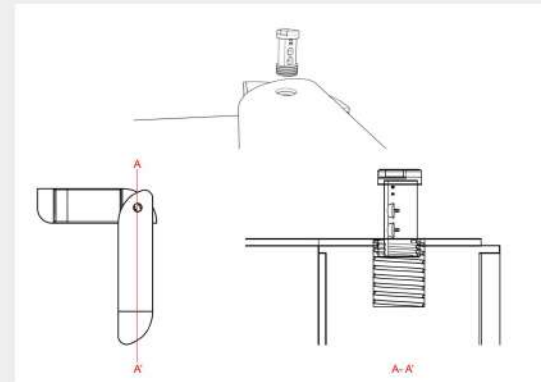
LEFT



RIGHT



The side table is supported by two beams which are rotatable pieces.



The lighting-charging unit is rotatable by using threaded screw like parts



18 mm oak veneered
MDF board



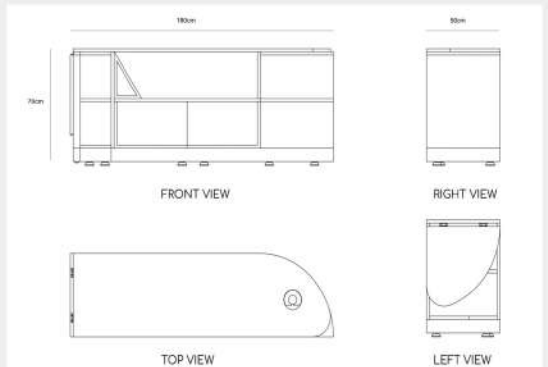
3 mm - Aluminium
Rectangular Tube



Flexible Plywood
board



There are six legs which protects the floor scratching and distribute the loading. They are assembled by turning the nut. Hidden wheels provides a clean and minimal picture.





Selen Argadal
argadal@itu.edu.tr

Group 8

LEISURE-UP

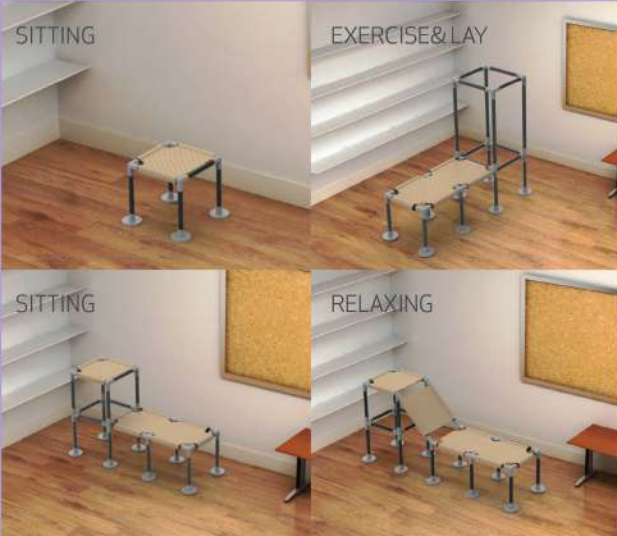
Create, purchase, and share!
Open design approached
relaxing, sitting and
exercising unit.

Leisure-Up is designed for the people who live in the cities. It aims to create positive impact during lockdown days with its approach. The users will build their furniture on the website and then share it. Main elements are rods, joineries and fabrics.

www.leisure-up.com is the community hub. The users can build and share their models. There are optionally already made models as modulations. After the purchase, they receive the furniture demonte. It is mostly for 1 to 3 people. You can see Leisure-Up at shared apartments, mini-hotels etc. Since we started to spend more time indoor, it is good to create different positions and locations at the shared space in our houses.

Leisure-Up, şehirde yaşayan insanlar için tasarlandı. Yaklaşımı ile pandemi günlerinde olumlu etki yaratmayı hedeflemektedir. Kullanıcılar mobilyalarını web sitesinde kuracaklar ve paylaşacaklardır. Ana bileşenleri çubuklar, bağlayıcılar ve kumaşlardır.

www.leisure-up.com topluluk merkezidir. Kullanıcılar modellerini oluşturabilir ve paylaşabilirler. İsteğe bağlı olarak hazır halde modeller vardır. Satın aldıktan sonra mobilya demonte ulaşır. Çoğunlukla 1 ile 3 kişi içindir. X'i ortak dairelerde, mini pansiyonlarda vb. görebilirsiniz. İç mekanda daha fazla zaman geçirmeye başladığımızdan, alanda farklı pozisyonlar ve konumlar oluşturmak iyi olacaktır.

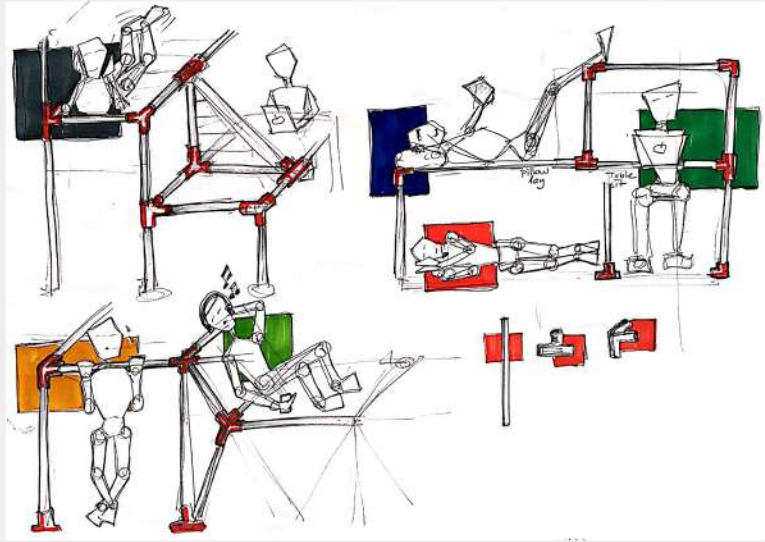
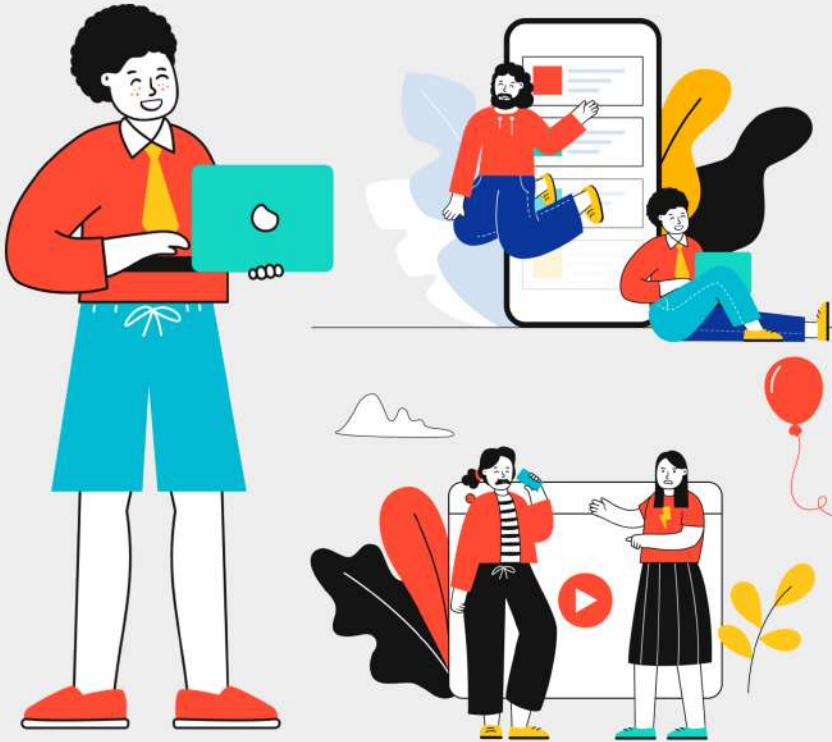


PERSONA(SİNEM, SERHAT, CAN)

Sinem, Serhat and Can are living in İstanbul. They are flatmates. Sinem is a teacher, Serhat is an engineer and Can is a student at a technical university. During the day, they are mostly at outside, at work, at school etc. In the evenings they see each other while they are having their dinner or watching TV. Since they become friends, they like to spend time together. There are various type of furnitures at their apartment such as beanbags, rocking chairs. Sinem does yoga, Serhat goes to gym and Can is at university basketball team. While they are together, they like to play board games, talk, drink etc.

PERSONA IN LOCKDOWN

Now they are together all the time. Sinem gives online courses, Serhat is working on laptop but sometimes needs to visit the factory, Can is taking online courses. They are still playing games and eating together. They are doing exercises at home and trying to stay active and positive. The need of playful things are pretty much what they crave now.



scenario

www.leisure-up.com

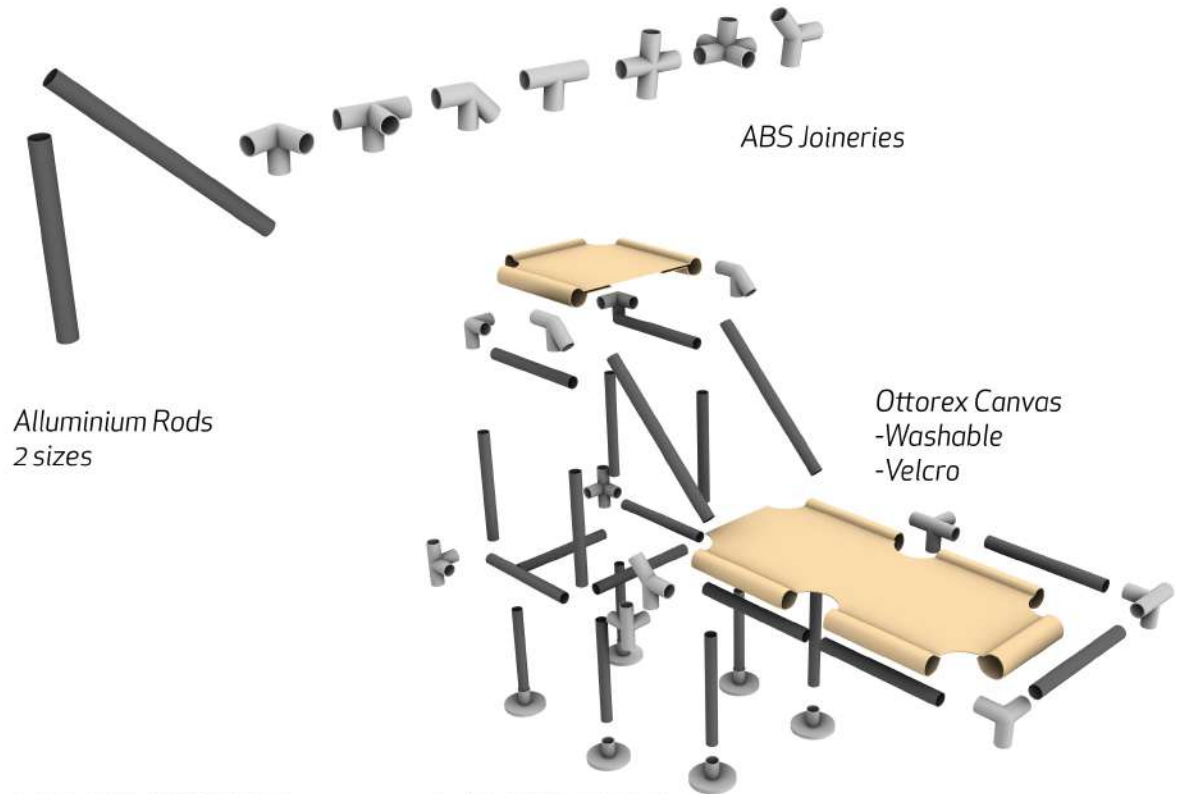
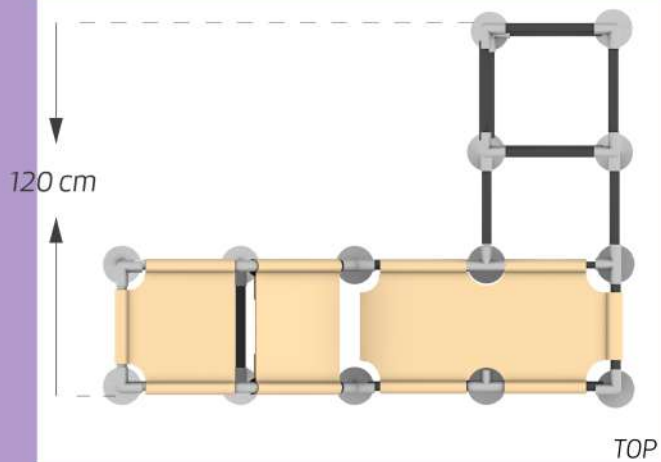
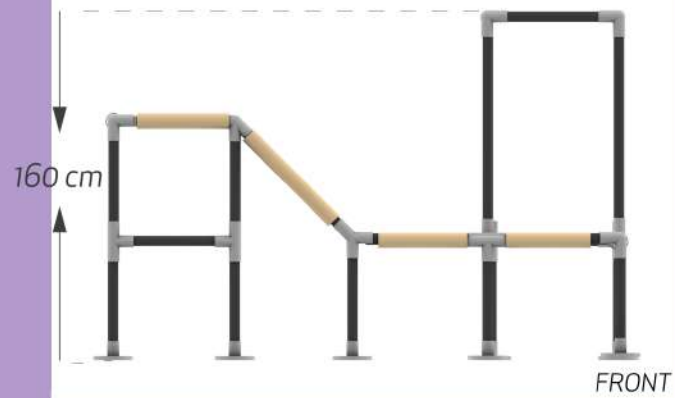
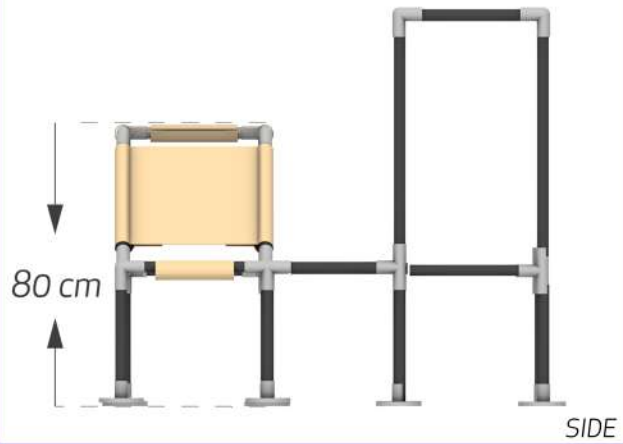
select function/s
relaxing, exercising, sitting

enter your space
dimensions

build furniture with
given elements
or
choose ready packs.

then purchase!

share your models
with the community



MATERIALS(COLORS (pantone codes),TEXTURES ETC.



Aluminium
pantone
Cool Gray 4 C



ABS
pantone
Cool Gray 11 C



Ottorex Canvas
pantone
7508 C



DEPARTMENT OF
INDUSTRIAL DESIGN

Coordinators / Koordinatorler

Sena Öztürk / Ceren Mutluay

Layout Design / Katalog Tasarımı

Ece Ünlü / Osman Mert Genç

Content Editors / İçerik Editörleri

Gözde Aça

This catalog has been prepared by the Department of Industrial Product Design, Istanbul Technical University.
All materials included are produced for educational purposes only.
© 2020 All rights reserved.

Bu katalog İstanbul Teknik Üniversitesi Endüstri Ürünleri Tasarımı Bölümü tarafından hazırlanmıştır.
İçeriğindeki tüm materyaller eğitim amacıyla üretilmiştir.
© 2020 Tüm hakları saklıdır.